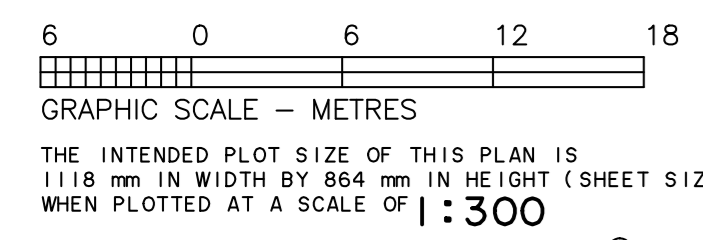


SUBDIVISION PLAN OF LOT B  
SECTION 31 TOWNSHIP 19  
NEW WESTMINSTER DISTRICT PLAN EPP72282

PLAN EPP77068

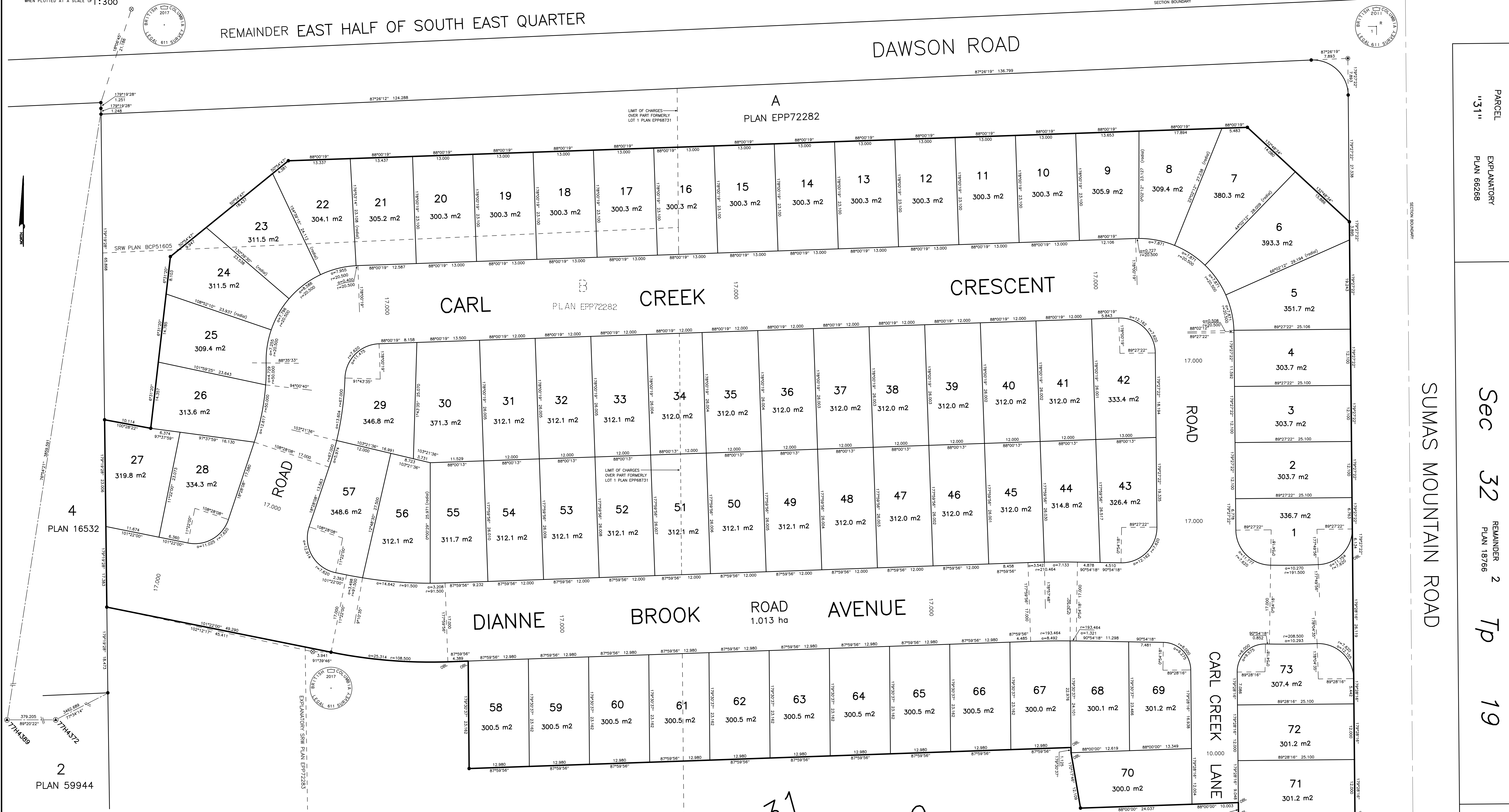
BCGS 926.009

MODIFIED MONUMENTATION HAS BEEN APPROVED FOR THIS SURVEY.



Sec 6 Tp 20

REMAINDER EAST HALF OF SOUTH EAST QUARTER



INTEGRATED SURVEY AREA NO. 24, ABBOTSFORD: NAD83(CSRS)4.0.0.BC.1  
THE UTM COORDINATES AND ESTIMATED HORIZONTAL POSITIONAL ACCURACY ARE DERIVED FROM THE MASCOOT PUBLISHED COORDINATES AND STANDARD DEVIATIONS.  
THIS PLAN SHOWS HORIZONTAL GROUND-LEVEL DISTANCES, UNLESS OTHERWISE SPECIFIED, TO COMPUTE GRID DISTANCES, MULTIPLY GROUND-LEVEL DISTANCES BY THE AVERAGE COMBINED FACTOR OF 0.9998174. THE AVERAGE COMBINED FACTOR HAS BEEN DETERMINED BASED ON MEAN ELLIPSOIDAL ELEVATION OF 150 METRES.  
GRID BEARINGS ARE DERIVED FROM CONTROL MONUMENTS 77H4389 AND 77H4372 AND ARE REFERRED TO THE CENTRAL MERIDIAN OF UTM ZONE 10

- LEGEND**
- DENOTES CONTROL MONUMENT FOUND
  - DENOTES STANDARD IRON POST FOUND
  - DENOTES STANDARD IRON POST PLACED
  - ⊙ DENOTES STANDARD CONCRETE POST FOUND
  - ⊙ DENOTES STANDARD CAPPED POST PLACED
  - ⊙ DENOTES IRON POST FOUND, OBLITERATED DURING SURVEY

PUBLISHED MONUMENT INFORMATION FOR MAPPING PURPOSES				
DATUM: NAD83(CSRS)4.0.0.BC.1 UTM ZONE 10				
TABLE MARKING	NORTHING	EASTING	COMBINED FACTOR	HPA
77H4389	5436828.225	553964.895	0.9998375	0.02
77H4372	5436832.596	554343.937	0.9998373	0.02
				HPA DENOTES ESTIMATED HORIZONTAL POSITIONAL ACCURACY

ERIC PETERSON  
LAND SURVEYING LTD.  
H102 - 33119 SOUTH FRASER WAY  
ABBOTSFORD, B.C. V2S 2B1  
TELEPHONE 604-854-1077

THE FIELD SURVEY REPRESENTED BY THIS PLAN WAS COMPLETED ON THE 18th DAY OF OCTOBER, 2017  
ERIC PETERSON, BCLS #611

EOR# 204516

THIS PLAN LIES WITHIN THE FRASER VALLEY REGIONAL DISTRICT  
THIS PLAN LIES WITHIN THE JURISDICTION OF THE APPROVING OFFICER FOR THE CITY OF ABBOTSFORD  
CITY OF ABBOTSFORD FILE: PR116-002

PARCEL "A"  
EXPLANATORY PLAN 66268

Sec 32 REMAINDER 2  
PLAN 18766 Tp 19

PARCEL "A"  
EXPLANATORY PLAN 21740