

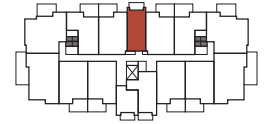
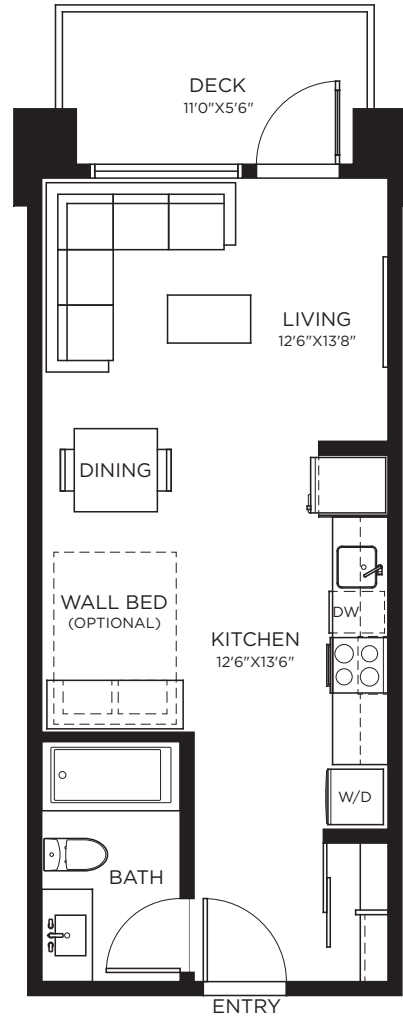


# THE YEARLING

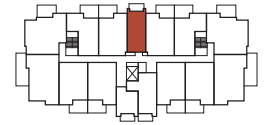
AT IRON HORSE

## PLAN A1

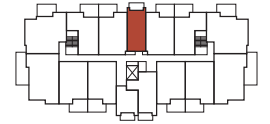
STUDIO 1 BATH  
439 SQ.FT.



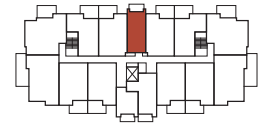
FLOOR 6



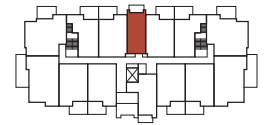
FLOOR 5



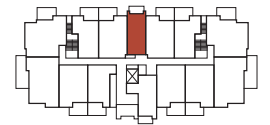
FLOOR 4



FLOOR 3



FLOOR 2



FLOOR 1



The Developer reserves the right to make modifications to floor plans, features and/or finishes without notice. Sizes are based on architectural measurements E.&O.E.



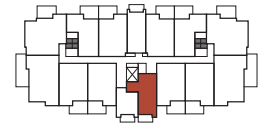
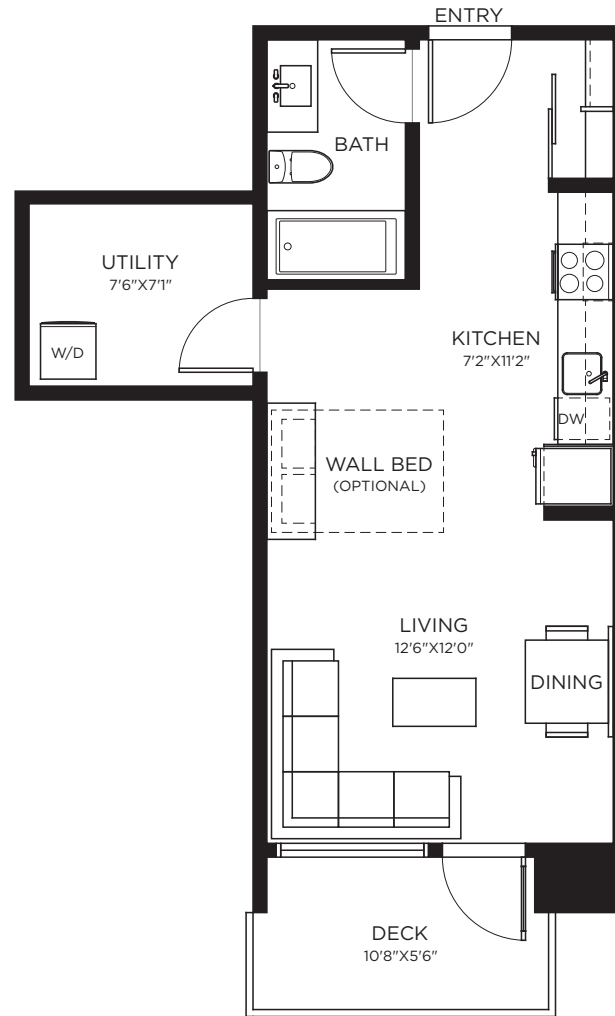


# THE YEARLING

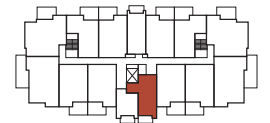
AT IRON HORSE

## PLAN A2

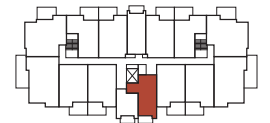
STUDIO 1 BATH  
470 SQ.FT.



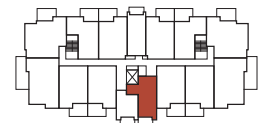
FLOOR 6



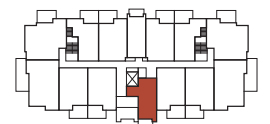
FLOOR 5



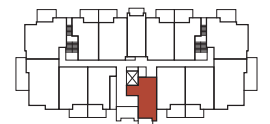
FLOOR 4



FLOOR 3



FLOOR 2



FLOOR 1



The Developer reserves the right to make modifications to floor plans, features and/or finishes without notice. Sizes are based on architectural measurements E.&O.E.



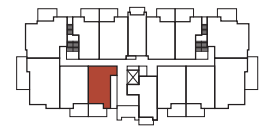
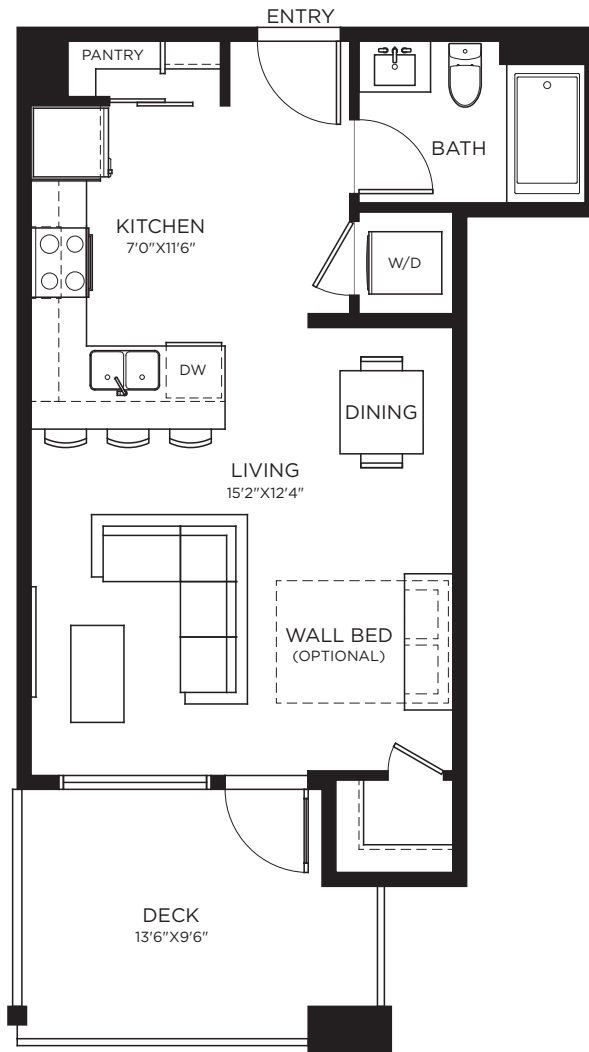


# THE YEARLING

AT IRON HORSE

## PLAN A3

STUDIO 1 BATH  
497 SQ.FT.



FLOOR 1



The Developer reserves the right to make modifications to floor plans, features and/or finishes without notice. Sizes are based on architectural measurements E.&O.E.



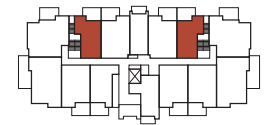
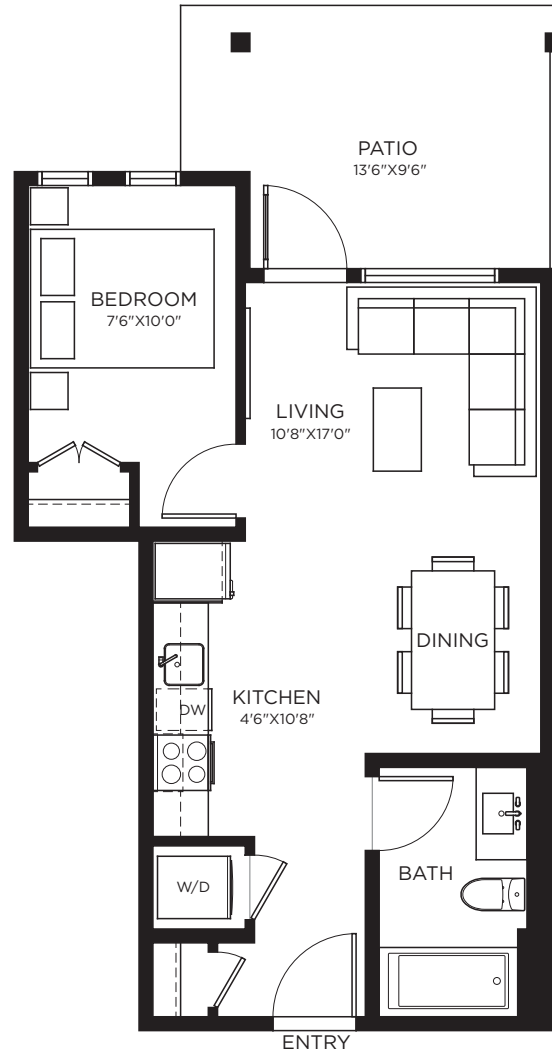


# THE YEARLING

AT IRON HORSE

## PLAN B1

1 BED 1 BATH  
487 SQ.FT.



FLOOR 1



The Developer reserves the right to make modifications to floor plans, features and/or finishes without notice. Sizes are based on architectural measurements E.&O.E.



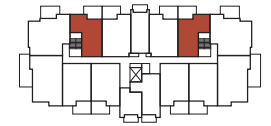
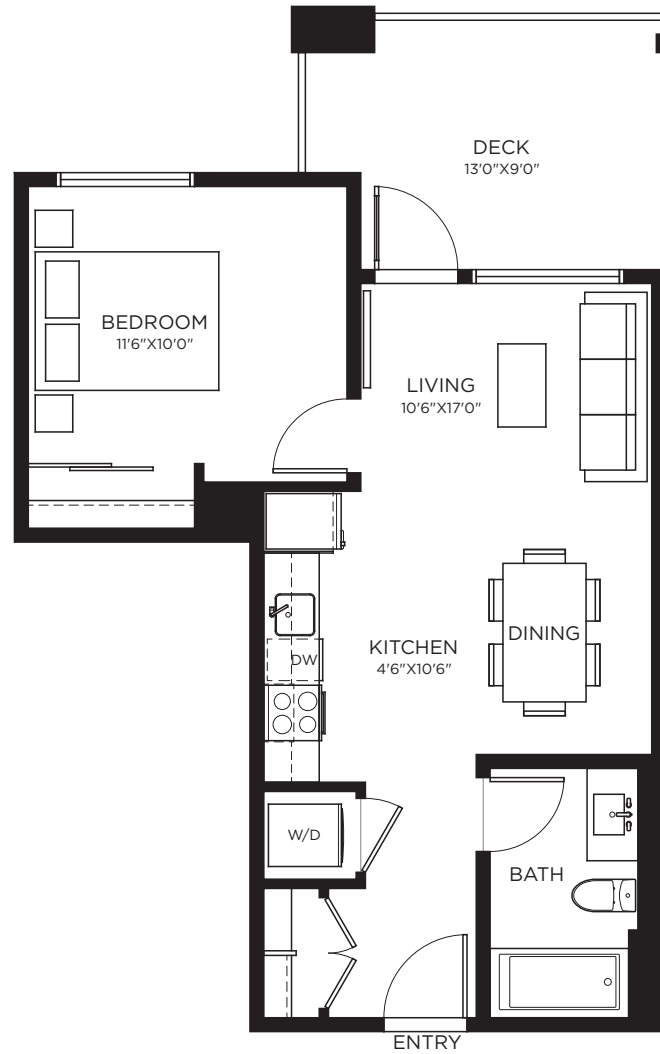


# THE YEARLING

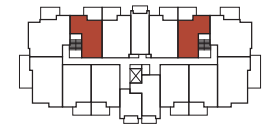
AT IRON HORSE

## PLAN B2

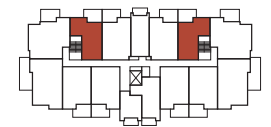
1 BED 1 BATH  
540 SQ.FT.



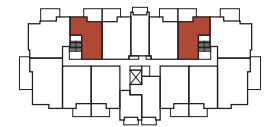
FLOOR 6



FLOOR 5



FLOOR 4



FLOOR 3



The Developer reserves the right to make modifications to floor plans, features and/or finishes without notice. Sizes are based on architectural measurements E.&O.E.



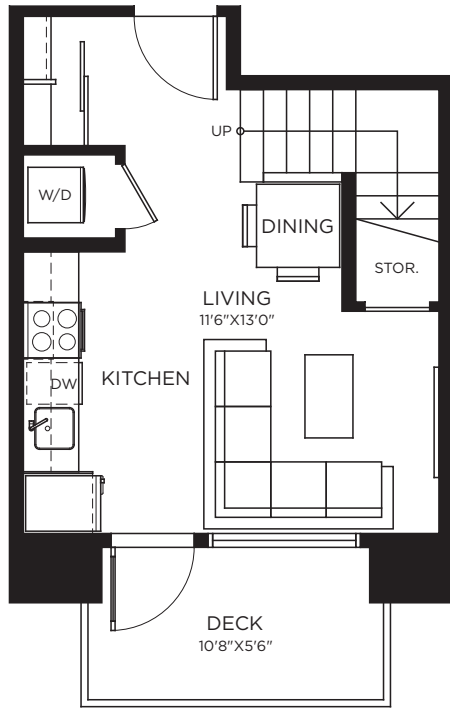


# THE YEARLING

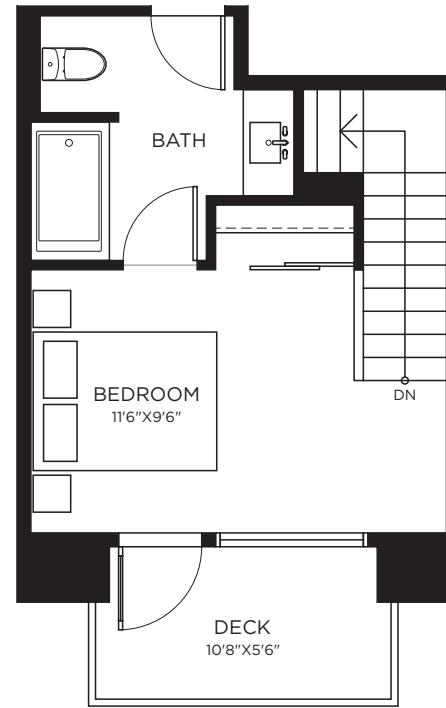
AT IRON HORSE

## PLAN B3

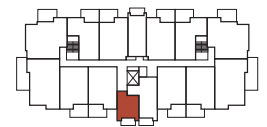
1 BED 1 BATH  
545 SQ.FT.



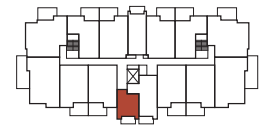
**MAIN  
FLOOR**



**UPPER  
FLOOR**



FLOOR 5



FLOOR 3



The Developer reserves the right to make modifications to floor plans, features and/or finishes without notice. Sizes are based on architectural measurements E.&O.E.



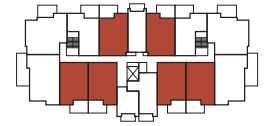
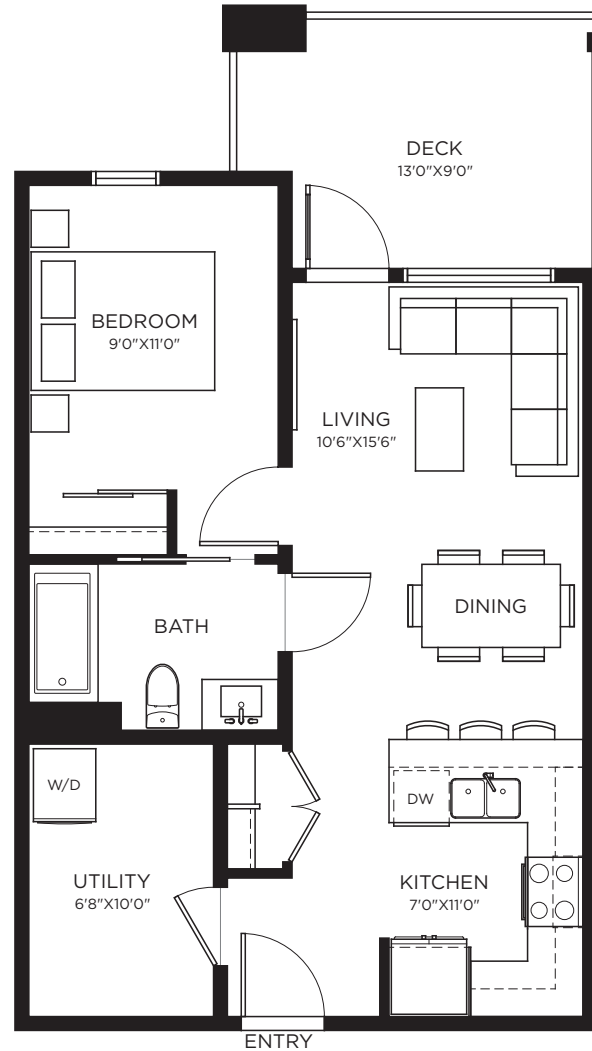


# THE YEARLING

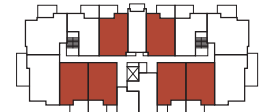
AT IRON HORSE

## PLAN B4

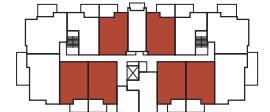
1 BED 1 BATH  
613 SQ.FT.



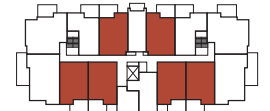
FLOOR 6



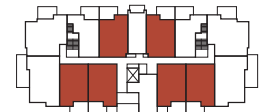
FLOOR 5



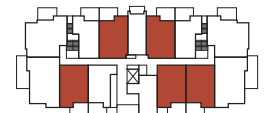
FLOOR 4



FLOOR 3



FLOOR 2



FLOOR 1



The Developer reserves the right to make modifications to floor plans, features and/or finishes without notice. Sizes are based on architectural measurements E.&O.E.



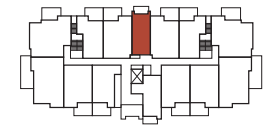
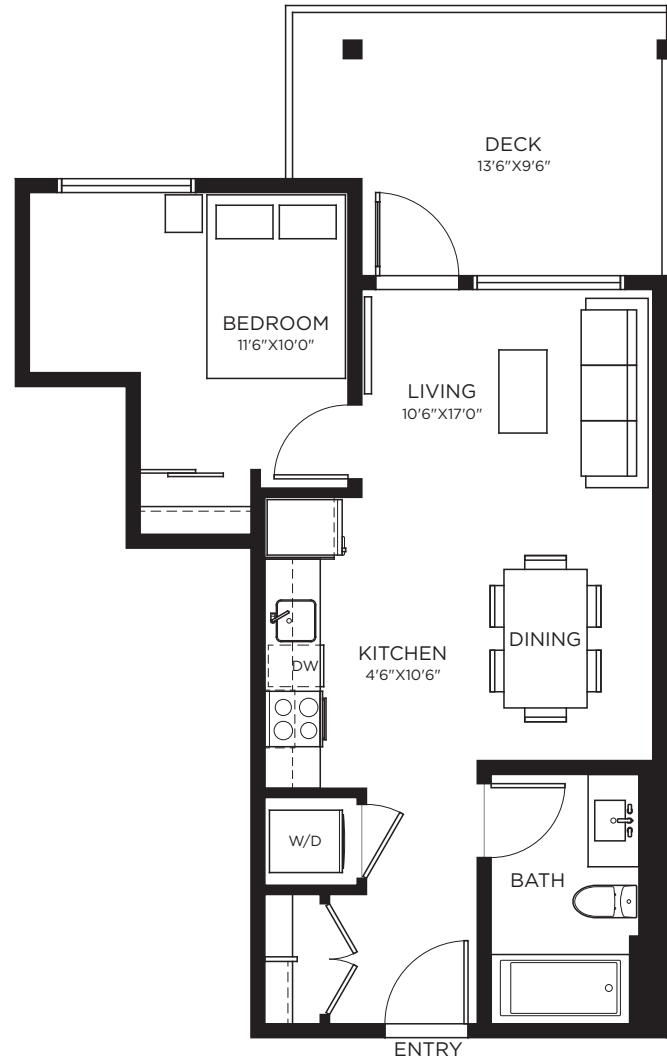


# THE YEARLING

AT IRON HORSE

## PLAN B5

1 BED 1 BATH  
517 SQ.FT.



FLOOR 1



The Developer reserves the right to make modifications to floor plans, features and/or finishes without notice. Sizes are based on architectural measurements E.&O.E.





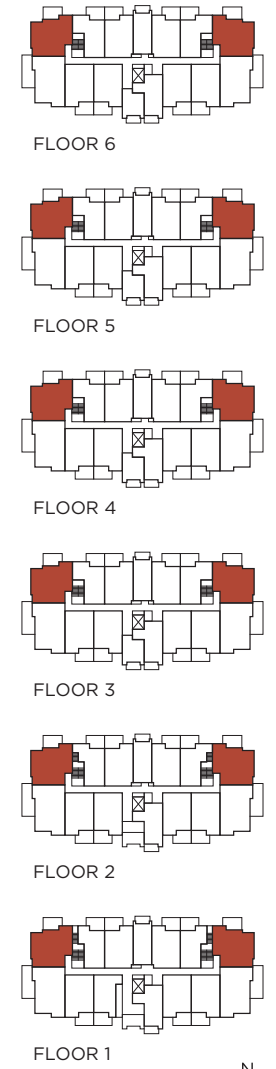
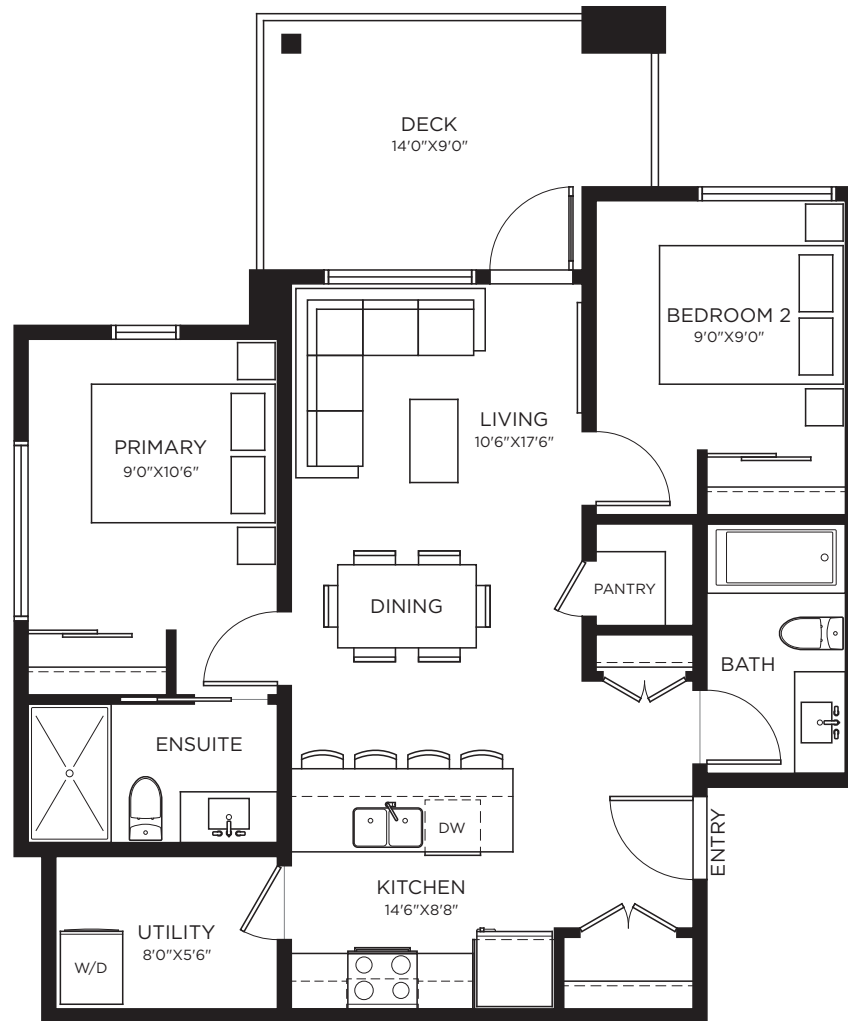


# THE YEARLING

AT IRON HORSE

## PLAN C1

2 BED 2 BATH  
787 SQ.FT.



FLOOR 6  
FLOOR 5  
FLOOR 4  
FLOOR 3  
FLOOR 2  
FLOOR 1



The Developer reserves the right to make modifications to floor plans, features and/or finishes without notice. Sizes are based on architectural measurements E.&O.E.



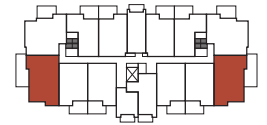
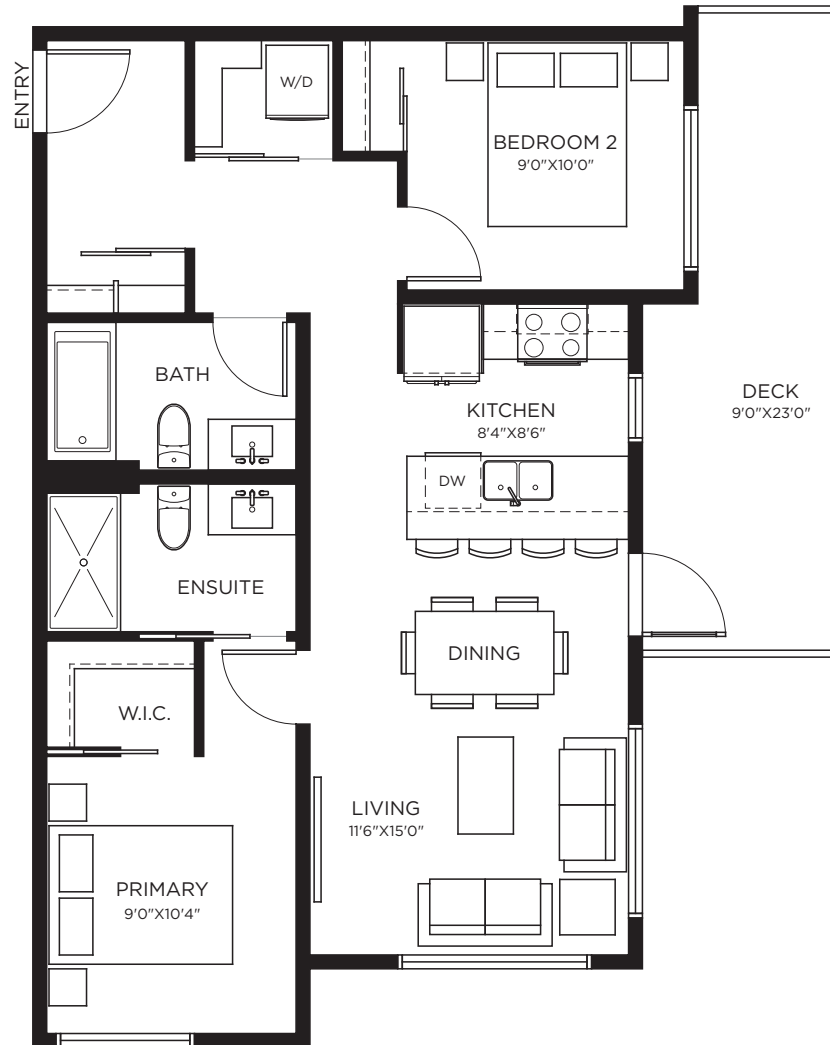


# THE YEARLING

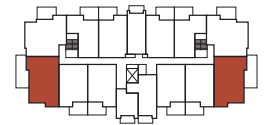
AT IRON HORSE

## PLAN C2

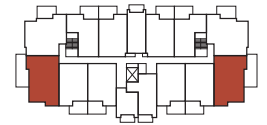
2 BED 2 BATH  
796 SQ.FT.



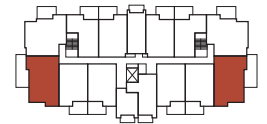
FLOOR 6



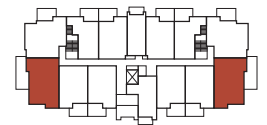
FLOOR 5



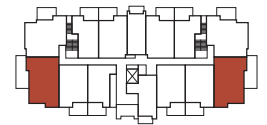
FLOOR 4



FLOOR 3



FLOOR 2



FLOOR 1



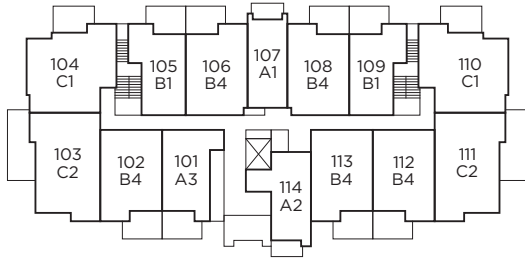
The Developer reserves the right to make modifications to floor plans, features and/or finishes without notice. Sizes are based on architectural measurements E.&O.E.



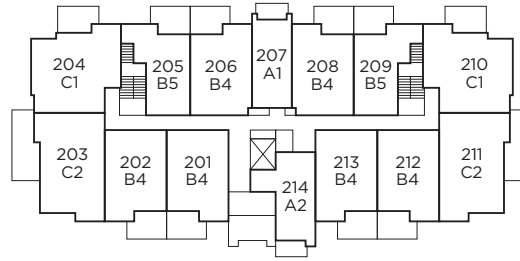


# THE YEARLING

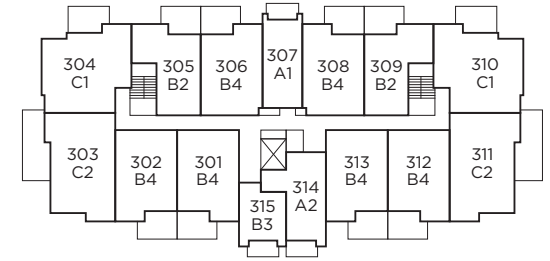
AT IRON HORSE



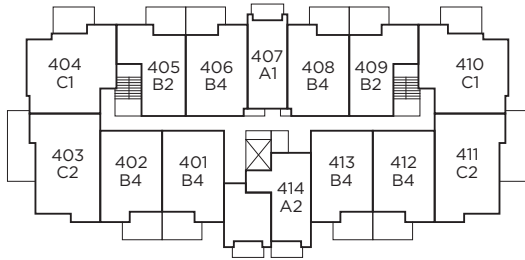
FLOOR 1



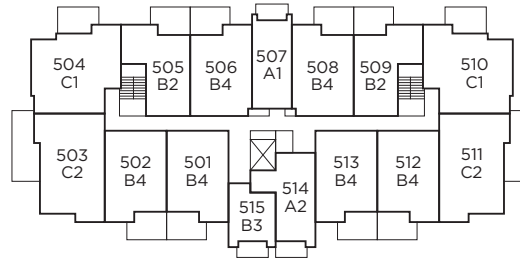
FLOOR 2



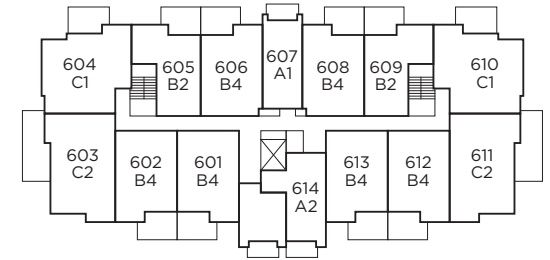
FLOOR 3



FLOOR 4



FLOOR 5



FLOOR 6



The Developer reserves the right to make modifications to floor plans, features and/or finishes without notice. Sizes are based on architectural measurements E.&O.E.

